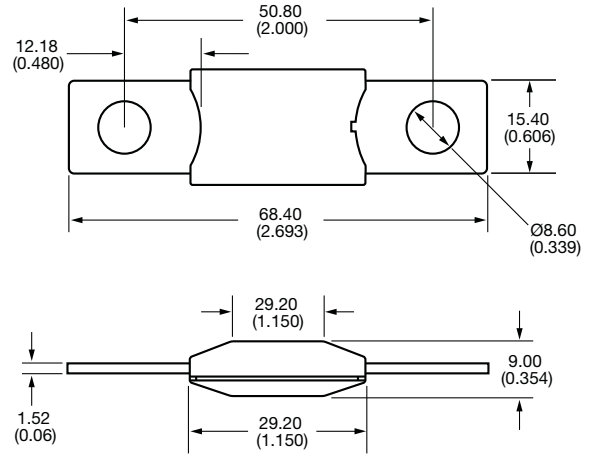


Dimensions - mm(in)



Bolt In Automotive Fuses

- Applications:** For high current applications. Use with Cooper Bussmann HMG or FMG fuseholders. (See pages 48-49.)
- Current Rating:** 100-300A.
- Voltage Rating:** 32Vdc*
- Interrupt Rating:** 1,000A @ 32Vdc
- Housing Material:** UL-rated 94V0 thermoplastic
- Terminal Material:** Copper
- Mounting:** M8 or 5/16-18 or less studs on 2.00 in (50.8mm) centers
Max torque of 8.1 to 9.6 ft-lbs (12 ±1N•m)
- Marking:** Color-coded amperage ratings
- Compliances: SAE J1171 (ignition protected), ISO 8820-5

*Consult factory for higher voltage fuses.

Time-Current Specifications

% of Rating	80A-250A		300A-500A	
	Min.	Max.	Min.	Max.
75%	--	--	4 hrs	∞
100%	4 hrs	∞	--	--
135%	120s	1800s	--	--
200%	1s	15s	1s	15s
350%	0.3x	5s	0.5s	5s
600%	0.1s	1s	0.1s	1s

Part Numbering System

Series **Rating**
B **K** **-** **A** **M** **G** - **□** **□** **□**

- 100 - 100 amps
- 125 - 125 amps
- 150 - 150 amps
- 175 - 175 amps
- 200 - 200 amps
- 225 - 225 amps
- 250 - 250 amps
- 300 - 300 amps
- 400 - 400 amps
- 500 - 500 amps

Time-Current Curves

